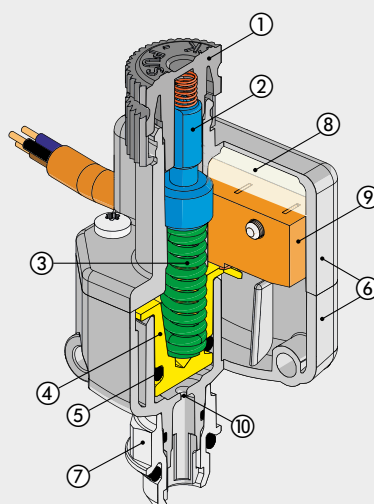


A knurled push-lock handle is provided for regulation

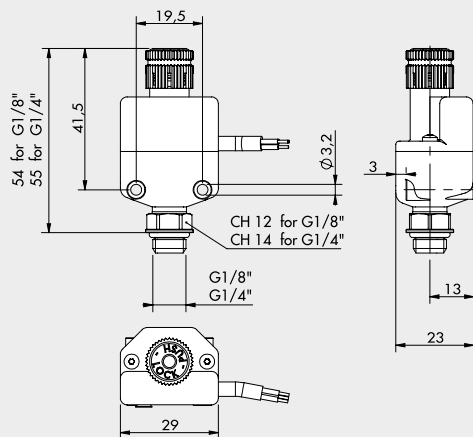


Adjustable pressure interval	bar	0.5 to 10
Hysteresis (not adjustable)	bar	from 0.4 to 0.8 (See diagram)
Maximum pressure	bar	15
	MPa	1.5
	psi	217
Operating temperature range at: 1 MPa; 10 bar; 145 psi	°C	50
	°F	122
Lower threaded port		G 1/8" - G 1/4"
Maximum current	A	2
Maximum voltage	V	250
Outside diameter of cable	mm	4.9
Number of wires and cross section		3 x 0.5 mm ²
Contacts		Normally-Open (NO) and Normally-Closed (NC)
Protection		IP65
Number of switchings		5 x 10 ⁶
Fluid		Filtered lubricated or unlubricated compressed air. Lubrication, if used, must be continuous
Mounting position		In any position.
Weight	g	With cable 2 m: 12
		With M8 connector: 35

- ① Technopolymer adjusting push-lock handle
- ② Brass adjusting screw
- ③ Steel piston spring
- ④ Brass piston
- ⑤ NBR gaskets
- ⑥ Technopolymer bodies
- ⑦ Rotary connection in nickel-plated brass
- ⑧ Resin finish for IP65
- ⑨ Electrical contact
- ⑩ Choke to reduce peaks in pressure



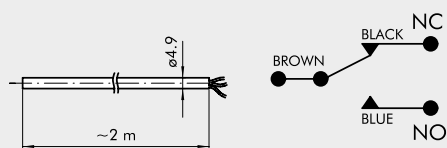
DIMENSIONS AND ORDERING CODES



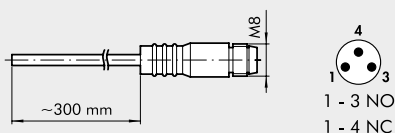
Code	Description
9000401	1/8 2A NO/NC pressure switch, 2-metre cable
9000402	1/8 2A NO/NC pressure switch, M8 connector
9000405	1/4 2A NO/NC pressure switch, 2-metre cable
9000406	1/4 2A NO/NC pressure switch, M8 connector

WIRING DIAGRAM

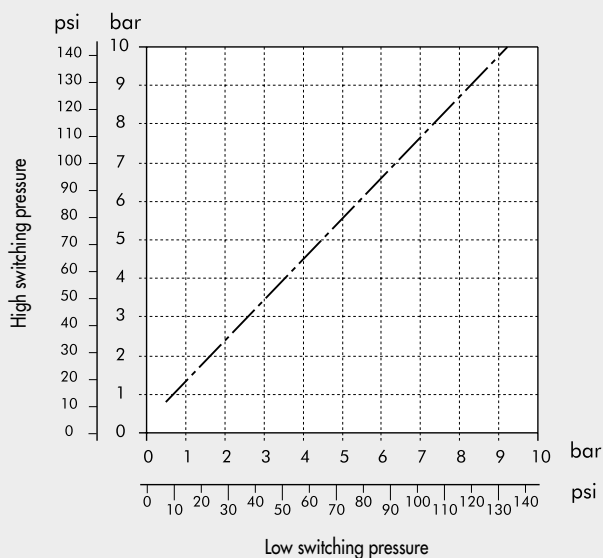
VERSION WITH CABLE



VERSION WITH M8 CONNECTOR

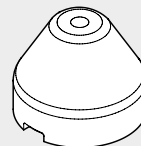


HYSTERESIS GRAPH



ACCESSORIES

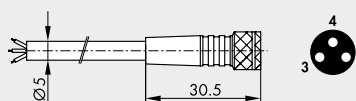
SECURITY KNOB



Code	Description
9200703	Acc. security knob

NOTE: Pull outwards to remove the knob from the pressure switch on the unit. Insert the security knob and regulate the pressure switch. Then press the handle firmly to lock it in position. If the pressure switch needs to be reset, remove the security knob by forcing it laterally with a screwdriver.

M8 STRAIGHT CONNECTOR WITH CABLE



Pin	Cable color
1	Brown
3	Blue
4	Black

Code	Description
02400A0100	M8 female 3 PIN HIGH FLEX CL6 connector with cable L = 1 m
02400A0250	M8 female 3 PIN HIGH FLEX CL6 connector with cable L = 2.5 m
02400A0500	M8 female 3 PIN HIGH FLEX CL6 connector with cable L = 5 m
02400A1000	M8 female 3 PIN HIGH FLEX CL6 connector with cable L = 10 m

Mobile laying cable, class 6 according to IEC 60228

NOTES

DIGITAL PRESSURE SWITCH



The digital pressure switch allows both the transmission of electrical pressure signals and the instant display of pressure. Two digital outputs, which can be set according to the two pressure values reached, are available.

An analogue output of a voltage proportional to the pressure reading is also available. The values are clearly displayed on a LED video and different parameters can be entered from the keypad.

Hysteresis can be adjusted and the unit of measurement for pressure can be modified.

Two models are available:

Series **600** (historical version), characterised by G1/8" female pneumatic ports, one at the bottom and one at the back (pressure switch supplied with bottom port covered with a removable plug); one-colour LED; pre-wired cable.

Series **640** (the latest version), characterised by R1/8" male pneumatic ports (taper thread) and M5 female thread inside on the rear side; two-colour LED displays that can be programmed depending on the pressure signal; cable with connector. A kit of accessories is provided for fixing to the top or wall, or to a panel.



TECHNICAL DATA		SERIES 600	SERIES 640
Working pressure range	bar	-1 to 10	
	MPa	-0.1 to 1	
Maximum admissible pressure	bar	15	
	MPa	1.5	
Readable resolution	bar	0.01	
	MPa	0.001	
	kg/cm ²	0.01	
	psi	0.1	
Power supply	VDC	12 to 24 ± 10%, max ripple 10%	
Current consumption	mA	≤ 55	≤ 40
Digital outputs		2 type PNP, with max current 80 mA, max voltage 24 VDC; residual voltage ≤ 1V (at 80 mA)	2 type PNP, with max current 125 mA, max voltage 24 VDC; residual voltage ≤ 1.5 V (at 125 mA)
		≤ ±0.2 % full scale ±1 digits	
Digital output repeatability		Adjustable or fixed at 3 digits for operation within a pressure range	
Hysteresis		≤ 2.5	
Actuation response time	ms	24, 192, 768	
Interference suppression selectable at	ms	25, 100, 250, 500, 1000, 1500	
Short-circuit protection at the outputs		Yes	
LED 7 segment display		3 ½ digit display	
Display colours		red	red/green
Display accuracy		±2% full scale ±1 digit, ambient temperature 25° ±3°C	
Indicators		green LED (output 1), red LED (output 2)	orange LED (output 1 and output 2)
Analogue output		1-5 V ±2.5 % (0 bar - 1V; 10 bar - 5V; it doesn't read the vacuum)	
		Linearity ≤ 1% full scale	
		Output impedance: about 1 kΩ	
Thermal characteristic		≤ ±2% full scale of the calibration pressure (at 25°C), in the temperature range 0 - 50°C	
Compressed air ports		2 G1/8" female thread	1 R1/8" male taper thread (M5 female inside)
Power cable		2 m, with five 0.15 mm ² wires, oil-resistant	
		pre-wired cable, not removable	removable connector
Certifications		CE, Rohs	
Weight	g	105, including 2 m cable	86, including 2 m cable
AMBIENT CONDITIONS			
Fluid		Filtered and unlubricated air, inert non-corrosive and non-explosive gas	
Degree of protection		IP 40 - IP65 (with accessory protection assembled)	
Temperature range	°C	0 to 50	
Storage temperature	°C	-20 to +60, but without condensate or ice	-10 to +60, but without condensate or ice
Ambient humidity		35 to 85% relative humidity; no condensate	
Insulation voltage		1000 VAC for one minute between casing and cable	
Resistance of Insulation		Min. 50 MΩ minimo (at 500 VDC between casing and cable)	
Vibration admitted		1.5 mm amplitude or 10G with scanning every minute from 10 to 55 Hz at 10 Hz, for 2 hours in each direction x, y and z	
Impact		980 m/s ² (100 g), 3 times in each direction x, y and z 100 m/s ² (10 g), 3 times in each direction x, y and z	