

# COMPACT CYLINDER WITH INTEGRATED VALVE, SERIES CCIV

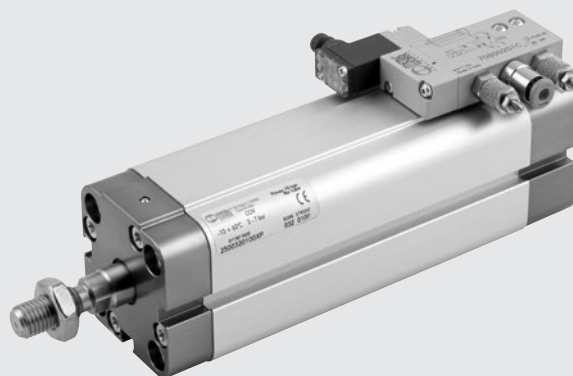
How many times would we have liked to have a pneumatic actuator complete with a control system, so that we would simply need to connect a compressed air hose and a power cable to control the movement of the piston rod?

CCIV is the simple, direct answer to this requirement.

In order to control a standard cylinder, you need a solenoid valve, the required space and a system to fix the solenoid valve, 3 or 5 fittings, 3 pipes, flow regulators, if needed, silencers on the exhaust side; this means 12-14 component parts to be handled and assembled. With CCIV a code is enough to obtain a fully assembled and tested product, in line with the "plug & play" philosophy.

They are double-acting cylinders derivatives from the CMPC series, with a low power consumption solenoid valve. The solenoid valve is the 5/2 monostable type, so the piston rod comes out when it is powered on, and retracts when it is powered off.

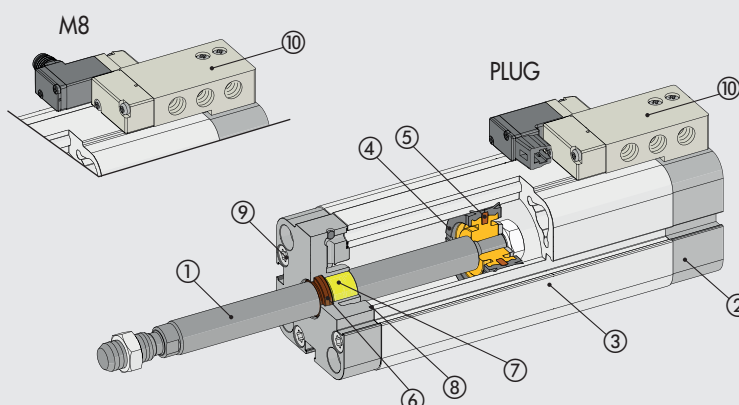
You can choose whether to have a product ready assembled with automatic fitting on the inlet port and fixed or adjustable silencers on the exhaust ports or simply with threaded connections of the inlet and outlet ports.



TECHNICAL DATA		Ø 20	Ø 25	Ø 32	Ø 40
Pressure range	bar			3 to 7	
	MPa			0.3 to 0.7	
	psi			44 to 102	
Temperature range	°C			-10 to +50	
	°F			14 to 122	
Fluid		Unlubricated air; lubrication, if used, must be continuous			
Versions		Double-acting cylinder			
		Monostable 5/2 solenoid valve; when operated, the piston rod comes out. Plug-in or M8 connector			
		With M7 threaded ports or a solenoid valve complete with automatic connector and fixed or adjustable silencers, on the exhaust ports			
Magnet for sensors		YES			
Inrush pressure	bar	0.6	0.6	0.6	0.4
Standard strokes	mm	from 5 to 50	from 5 to 50	from 5 to 80	from 5 to 80
Maximum recommended strokes	mm	200	200	300	300
Maximum speed at 6 bar OUT/IN	m/s	1.4 / 1.2	1 / 0.8	0.6 / 0.5	0.4 / 0.4
Forces generated at 6 bar thrust/retraction		See cylinder "General technical data" at the beginning of the chapter			
Voltage range		24VDC ±10%			
Power	W	0.9			
Solenoid rating		100% ED			
Manual operator		Monostable			
Insulation class		F155			
Degree of protection		With plug-in connector: IP51; with M8 connector: IP65			
Installation		In any position			
Weights	stroke = 0 [g]	220	250	295	420
	each mm stroke [g]	2.35	2.73	3.17	4.41
Air quality required		ISO 8573-1 class 4-7-3			
Notes		For speeds lower than 0.2 m/s to prevent surging, use the version No stick-slip and non-lubricated air			

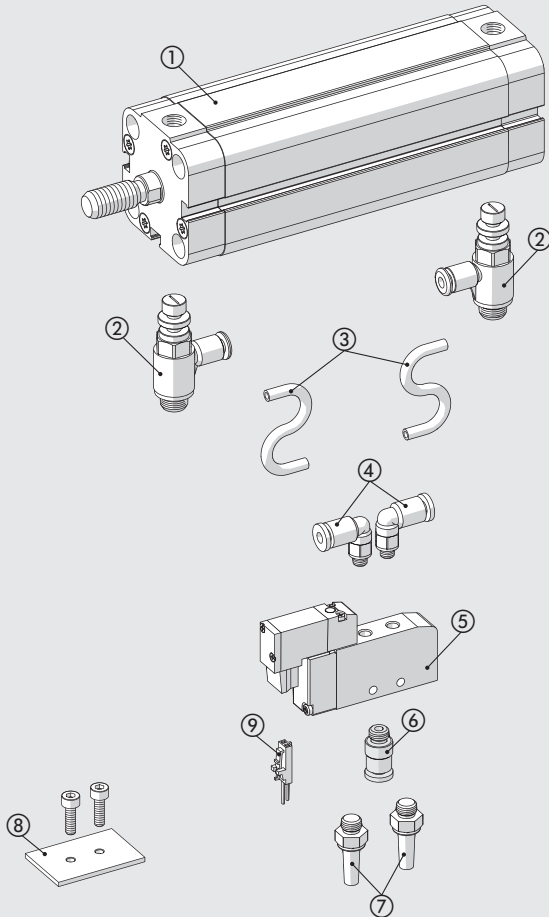
## COMPONENTS

- ① PISTON ROD: C45 steel or stainless steel, thick chromed
- ② HEAD: extruded anodized aluminium alloy
- ③ BARREL: drawn anodized and calibrated aluminium alloy
- ④ PISTON GASKET: polyurethane
- ⑤ MAGNET: Ø 20 to 32 neodymium-plastic; Ø 40 plastoferrite
- ⑥ PISTON ROD GASKET: polyurethane
- ⑦ GUIDE BUSHING: steel strip with bronze and PTFE insert
- ⑧ STATIC O-RINGS: NBR
- ⑨ SECURING SCREWS: zinc-plated steel
- ⑩ VALVE: painted aluminium + technopolymer

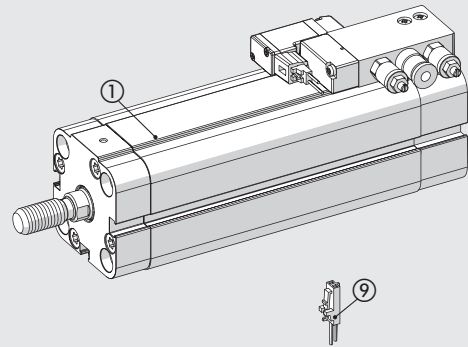


THE ADVANTAGES OF INTEGRATION

TRADITIONAL SOLUTION



CCIV

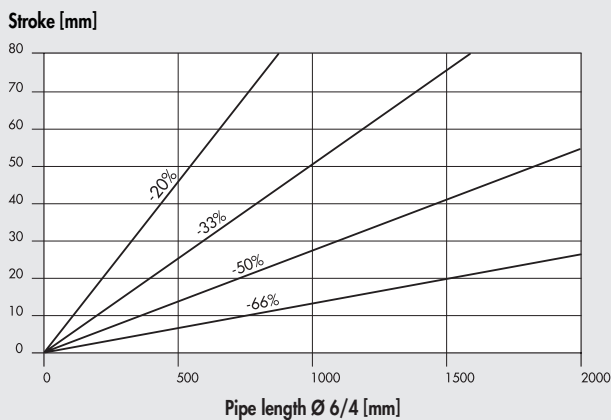


- One code only instead of 10-12 codes when ordering
- Savings in labour costs for assembly operations

- |                               |                     |                                 |
|-------------------------------|---------------------|---------------------------------|
| ① CYLINDER                    | ④ DELIVERY FITTINGS | ⑦ SILENCERS ON THE EXHAUST SIDE |
| ② FITTINGS OR FLOW REGULATORS | ⑤ SOLENOID VALVE    | ⑧ VALVE-FIXING SYSTEM           |
| ③ PIPES                       | ⑥ INLET FITTING     | ⑨ ELECTRICAL CONNECTOR          |

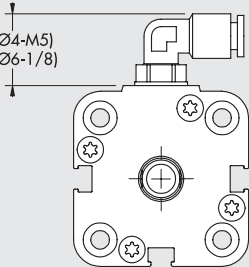
ENERGY SAVING

Reduced air consumption as the result of the elimination of pipes between valves and cylinder.  
 The sample diagram shows the air savings as a percentage for a Ø 25 cylinder, depending on the cylinder stroke and the length of Ø 6/4 pipes.



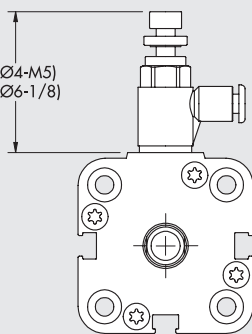
## REDUCED OVERALL DIMENSIONS

15 (Ø4-M5)  
19 (Ø6-1/8)

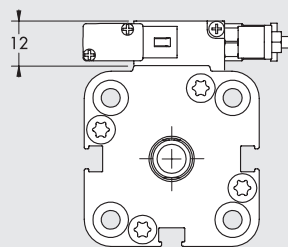


TRADITIONAL SOLUTION  
WITH FITTING

27 (Ø4-M5)  
31 (Ø6-1/8)



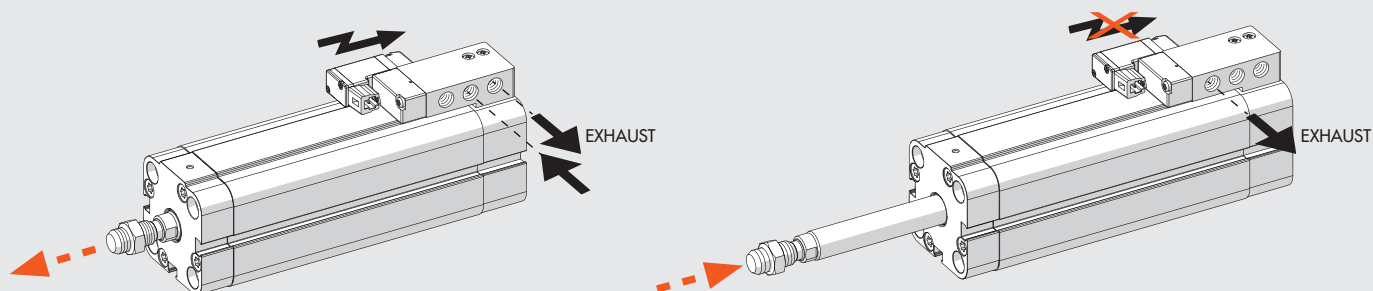
TRADITIONAL SOLUTION  
WITH FLOW REGULATOR



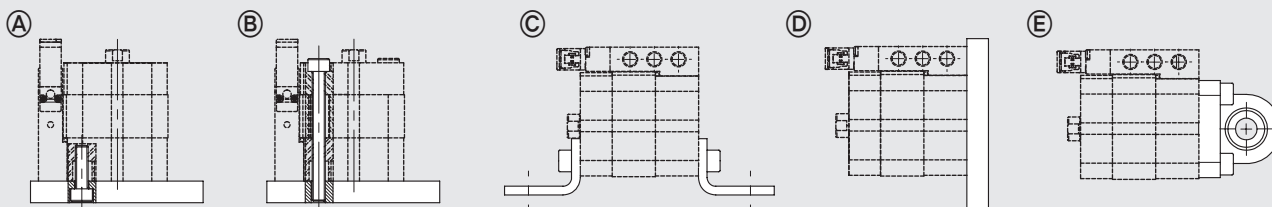
CCIV

## OPERATION

The piston rod comes out when the valve is powered on. The piston rod retracts when the valve is powered off.



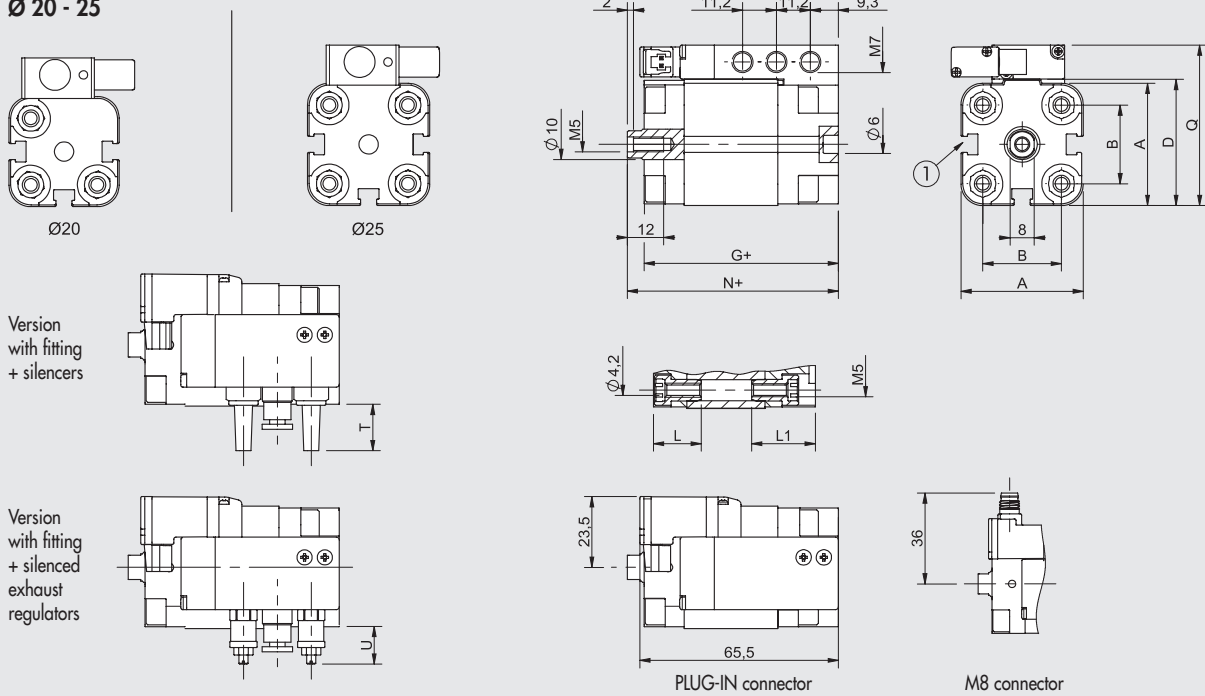
## FIXING OPTIONS



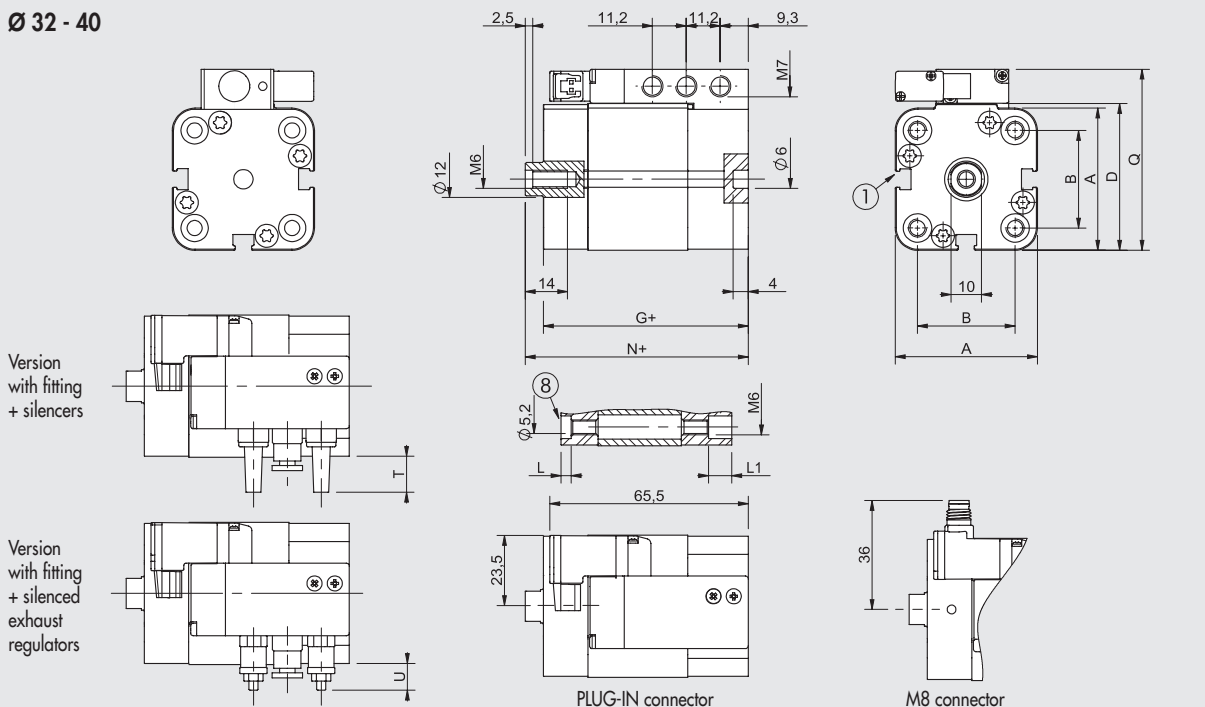
- Ⓐ Fixing to structural work with a screw, using the thread in the heads.
- Ⓑ Direct fixing from above using long through screws or tie rods. Non-magnetic stainless steel must be used (e.g. AISI 304).
- Ⓒ Fixing with feet; the ordering code covers the supply of only one foot and two screws for fixing to the cylinder.
- Ⓓ Fixing with a flange mounted on the front or rear head; the ordering code covers the supply of a flange and four screws for fixing to the cylinder.
- Ⓔ Fixing with articulated hinge to compensate for slight system misalignment and turn freely.  
The ordering code covers the supply of a hinge and four screws for fixing to the cylinder.

**DIMENSIONS**

**Ø 20 - 25**

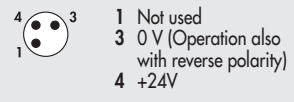


**Ø 32 - 40**



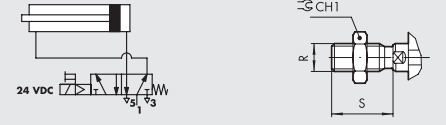
- + = ADD THE STROKE
- 1 = SENSOR SLOT
- 8 = SEAT FOR DIN 7984 SCREWS

**M8 CONNECTOR**



- 1 Not used
- 3 0 V (Operation also with reverse polarity)
- 4 +24V

**MALE PISTON ROD**



Ø	B											T	U		
	A	ISO	UNITOP	CH1	D	G	L	N	R	S	S1			L1	Q
20	36.5	-	22	17	37.5	45.5	18.5	50	M10x1.25	22	4.5	26	49	17	15÷27
25	40.5	-	26	17	41.5	46.5	19	52	M10x1.25	22	5.5	26	53	15	13÷24
32	47	32.5 <sup>+0.1</sup> <sub>-0.4</sub>	32 <sup>+0.4</sup> <sub>-0.1</sub>	17	48.5	50	4	56	M10x1.25	22	6	9.5	60	12	10÷21
40	56	38	42	17	57.5	50.5	4.5	57	M10x1.25	22	6.5	9.5	69	7	5÷17

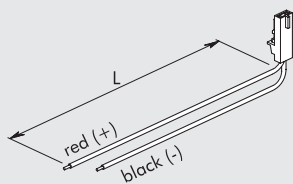
KEY TO CODES

CYL	23	0	0	32	0050	C	P	2	2
	TYPE			BORE	STROKE	MATERIAL	GASKETS	ELECTRICAL CONNECTION	PNEUMATIC FITTINGS
	23 Compact cylinder centre distances to UNITOP male piston rod	0 Double-acting	0 Magnetic S Non-magnetic ◆ G No stick-slip	▲ 20 ▲ 25 32 40	Ø 20 - 25: max 200 mm Ø 32 - 40: max 300 mm	■ C C45 piston rod chromium-plated X Stainless steel piston rod and nut	P Polyurethane gaskets	2 Plug-in M M8	1 M7 port 2 Straight fitting Ø 4 + silencers 3 Straight fitting Ø 4 + silenced exhaust regulators 4 Straight fitting Ø 6 + silencers 5 Straight fitting Ø 6 + silenced exhaust regulators
■	25 Compact cylinder centre distances to ISO male piston rod								
■	26 Compact cylinder centre distances to ISO female piston rod								

- Only for Ø 32 and 40
- ▲ Stainless steel piston rod
- ◆ Standard for Ø 20 and 25

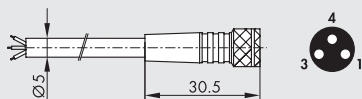
ACCESSORIES

PLUG-IN CONNECTOR



Code	Description
W0970512000	Plug-in connector for Mach 11 L = 300 mm
W0970512007	Plug-in connector for Mach 11 L = 1 m
W0970512002	Plug-in connector for Mach 11 L = 2 m

M8 STRAIGHT CONNECTOR WITH CABLE

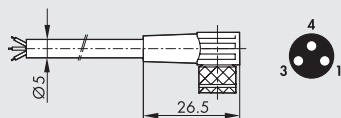


Pin	Cable color
1	Brown
3	Blue
4	Black

Code	Description
02400A0100	M8 female 3 PIN HIGH FLEX CL6 connector with cable L = 1 m
02400A0250	M8 female 3 PIN HIGH FLEX CL6 connector with cable L = 2.5 m
02400A0500	M8 female 3 PIN HIGH FLEX CL6 connector with cable L = 5 m
02400A1000	M8 female 3 PIN HIGH FLEX CL6 connector with cable L = 10 m

Mobile laying cable, class 6 according to IEC 60228

90° M8 CONNECTOR WITH CABLE



Pin	Cable color
1	Brown
3	Blue
4	Black

Code	Description
02400B0100	M8 female 3 PIN 90° HIGH FLEX CL6 connector with cable L = 1 m
02400B0250	M8 female 3 PIN 90° HIGH FLEX CL6 connector with cable L = 2.5 m
02400B0500	M8 female 3 PIN 90° HIGH FLEX CL6 connector with cable L = 5 m
02400B1000	M8 female 3 PIN 90° HIGH FLEX CL6 connector with cable L = 10 m

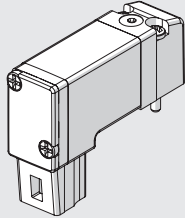
Mobile laying cable, class 6 according to IEC 60228

**SPARE PARTS**

**ACTUATORS**

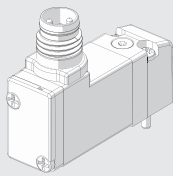
COMPACT CYLINDER WITH INTEGRATED VALVE, SERIES CCIV

**PLUG-IN PILOT**



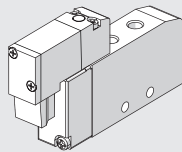
Code	Description
722113541100	PLT-10 3/2 NC 0.8W 24VDC LED plug-in with manual

**M8 PILOT**



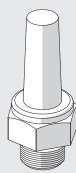
Code	Description
7222M3541100	PLT-10 3/2 NC 0.8W 24VDC LED M8 with manual

**CCIV 5/2 SOLENOID-PNEUMATIC MONOSTABLE VALVE 24 VDC**



Symbol	Code	Abbrev.	Weight [g]
	70800201C2	MSV 1.5 SOS OO 24VDC PLUG-IN	43.3
	70800201CM	MSV 1.5 SOS OO 24VDC M8	43.3

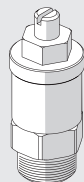
**SILENCER MW SE**



Code	Description
W0970530020	Silencer MW SE M7

For technical data, see **chapter E5**

**SILENCED EXHAUST REGULATOR MW SVL**



Code	Description
W0970520009	Silenced exhaust regulator MW SVL M7

For technical data, see **chapter E5**

**NOTES**

For other spare parts, such as gaskets and magnets, see page A1.124

# ACCESSORIES AND SPARE PARTS FOR CMPC, TWO-FLAT, STOPPER AND CCIV COMPACT CYLINDERS

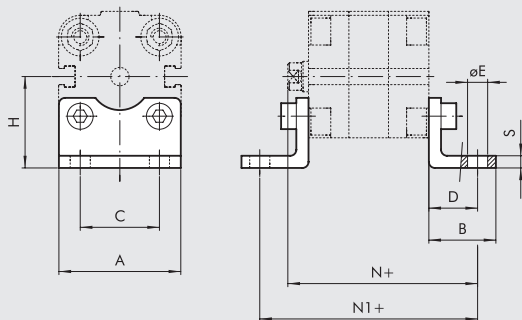
## ACCESSORIES

ACTUATORS

ACCESSORIES AND SPARE PARTS FOR COMPACT CYLINDERS

### FOOT - MODEL A

+ = ADD THE STROKE



#### CMPC UNITOP, TWO-FLAT UNITOP, CCIV UNITOP

Code	Ø	A	B	C	D	ØE	H	N	N1	only CCIV			Weight [g]
										N	N1	S	
W0950126001 ▲	12	30	17.5	18	13	5.5	22	55.5	64	-	-	3	26
W0950126001 ▲	16	30	17.5	18	13	5.5	22	55.5	64	-	-	3	26
W0950206001	20	36	22	22	16	6.6	27	58.5	70	66	77.5	4	46
W0950256001	25	40	22	26	16	6.6	30	58.5	71.5	65.5	78.5	4	52
W0950322001	32	45	35	32	24	7	31.9	74.5	92.5	80	98	4	76
W0950406001	40	60	28	42	20	9	42.5	72	85.5	77	90.5	5	88
W0950406001F *	40	60	28	42	20	9	42.5	72	85.5	-	-	5	88
W0950506001	50	68	32	50	24	9	47	77	93.5	-	-	6	176
W0950506001F *	50	68	32	50	24	9	47	77	93.5	-	-	6	176
W0950636001	63	84	39	62	27	11	59.5	84.5	104	-	-	6	276
W0950636001F *	63	84	39	62	27	11	59.5	84.5	104	-	-	6	276
W0950806001	80	102	42	82	30	11	65.5	94	116	-	-	8	392
W0951006001	100	123	45	103	33	13.5	78	109.5	132.5	-	-	8	558

#### CMPC ISO, TWO-FLAT ISO, CCIV ISO

Code	Ø	A	B	C	D	ØE	H	N	N1	only CCIV			Weight [g]
										N	N1	S	
W0950322001	32	45	35	32	24	7	31.9	74.5	92.5	80	98	4	76
W0950402001	40	52	43	36	28	9	36	80	101.5	85	106.5	4	100
W0950502001	50	65	47	45	32	9	45	85	109.5	-	-	4	162
W0950632001	63	75	47	50	32	9	50	89.5	114	-	-	6	266
W0950802001	80	95	61	63	41	12	63	105	138	-	-	6	456
W0951002001	100	115	65	75	41	14	71	117.5	148.5	-	-	6	572

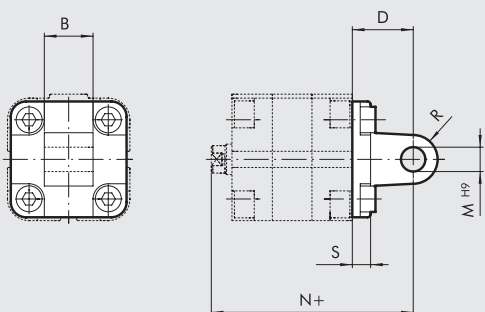
Note: Individually packed with 2 screws.

\* Only for Two-Flat version

▲ Non UNITOP norm fixing distance

### MALE HINGE-MODEL BA

+ = ADD THE STROKE



#### CMPC UNITOP, TWO-FLAT UNITOP, CCIV UNITOP

Code	Ø	B	D	M	N	only CCIV			Weight [g]
						N	R	S	
W0950126004 ▲	12	12	16	6	58.5	-	6	6	24
W0950126004 ▲	16	12	16	6	58.5	-	6	6	24
W0950206004	20	16	20	8	62.5	70	8	8	44
W0950256004	25	16	20	8	62.5	69.5	8	8	48

#### CMPC ISO, TWO-FLAT ISO, CCIV ISO

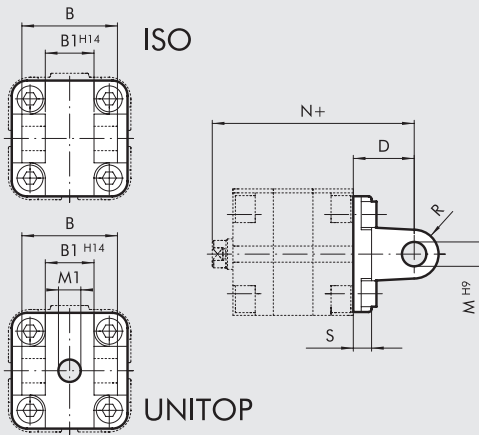
Code	Ø	B	D	M	N	only CCIV			Weight [g]
						N	R	S	
W0950322004	32	26	22	10	72.5	78	11	10	94
W0950402004	40	28	25	12	77	82	13	10	124
W0950502004	50	32	27	12	80	-	13	12	220
W0950632004	63	40	32	16	89.5	-	17	12	316
W0950802004	80	50	36	16	100	-	17	16	578
W0951002004	100	60	41	20	117.5	-	21	16	850

Note: Supplied with 4 screws.

▲ Non UNITOP norm fixing distance

**FEMALE HINGE-MODEL B**

+ = ADD THE STROKE



**CMPC UNITOP, TWO-FLAT UNITOP, CCIV UNITOP**

Code	Ø	B	B1	D	M	M1	N	only CCIV			Weight [g]
								N	R	S	
W0950322003	32	45	26	22	10	14	72.5	78	11	10	116
W0950406003	40	52	28	25	12	14	77	82	12.5	9	184
W0950506003	50	60	32	27	12	18	80	-	12.5	11	266
W0950636003	63	70	40	32	16	-	89.5	-	15	11	470
W0950806003	80	90	50	36	16	23	100	-	15	13	670
W0951006003	100	110	60	41	20	28	117.5	-	20	15	1110

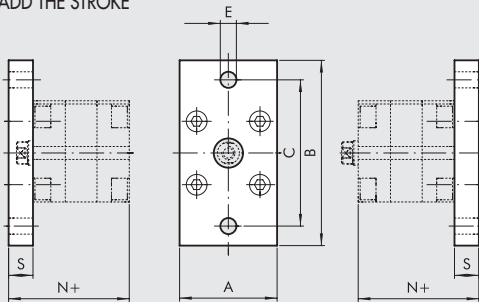
**CMPC ISO, TWO-FLAT ISO, CCIV ISO**

Code	Ø	B	B1	D	M	N	only CCIV			Weight [g]
							N	R	S	
W0950322003	32	45	26	22	10	72.5	78	11	10	116
W0950402003	40	52	28	25	12	77	82	13	10	160
W0950502003	50	60	32	27	12	80	-	13	12	252
W0950632003	63	70	40	32	16	89.5	-	17	12	394
W0950802003	80	90	50	36	16	100	-	17	16	670
W0951002003	100	110	60	41	23	117.5	-	21	16	1085

Note: Supplied with 4 screws, 4 washers, 2 snap-rings and 1 pin.

**FLANGE Ø 12 to 25 - MODEL C (FRONT AND REAR)**

+ = ADD THE STROKE



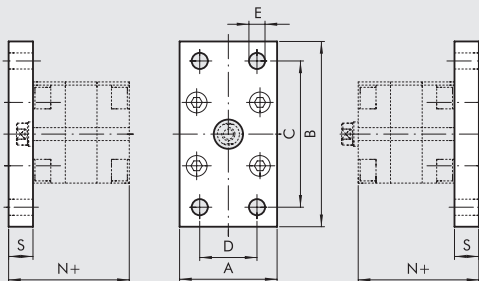
**CMPC, CCIV**

Code	Ø	A	B	C	E	N	only CCIV		Weight [g]
							N	S	
W0950126002 ▲	12	29	55	43	5.5	48	-	10	112
W0950126002 ▲	16	29	55	43	5.5	48	-	10	112
W0950206002	20	36	70	55	6.6	48	55.5	10	184
W0950256002	25	40	76	60	6.6	49.5	56.5	10	226

Note: Supplied with 4 screws  
▲ Non UNITOP norm fixing distance

**FLANGE Ø 32 to 100 - MODEL C (FRONT AND REAR)**

+ = ADD THE STROKE



**CMPC UNITOP, CCIV UNITOP**

Code	Ø	A	B	C	D	E	N	only CCIV		Weight [g]
								N	S	
W0950322002	32	50	80	64	32	7	54.5	60	10	246
W0950406002	40	60	102	82	36	9	55.5	60.5	10	454
W0950506002	50	68	110	90	45	9	57.5	-	12	655
W0950636002	63	87	130	110	50	9	65	-	15	1255
W0950806002	80	107	160	135	63	12	71	-	15	1900
W0951006002	100	128	190	163	75	14	81.5	-	15	2700

**TWO-FLAT UNITOP**

Code	Ø	A	B	C	D	E	N	S	Weight [g]
W0950322002	32	50	80	64	32	7	54.5	10	246
W0950406002F	40	60	102	82	36	9	55.5	10	454
W0950506002F	50	68	110	90	45	9	57.5	12	655
W0950636002F	63	87	130	110	50	9	65	15	1255
W0950806002F	80	107	160	135	63	12	71	15	1900

**CMPC ISO, TWO-FLAT ISO, CCIV ISO**

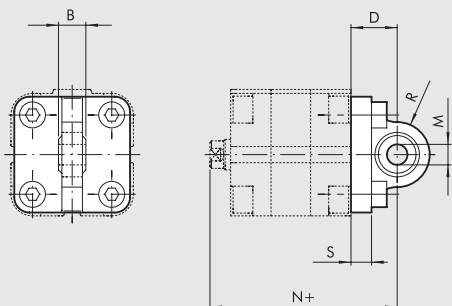
Code	Ø	A	B	C	D	E	N	only CCIV		Weight [g]
								N	S	
W0950322002	32	50	80	64	32	7	54.5	60	10	246
W0950402002	40	55	90	72	36	9	55.5	60.5	10	290
W0950502002	50	65	110	90	45	9	57.5	-	12	522
W0950632002	63	75	120	100	50	9	62	-	12	670
W0950802002	80	95	153	126	63	12	72	-	16	1420
W0951002002	100	115	178	150	75	14	82.5	-	16	2040

Note: Supplied with 4 screws  
Note: When installing the flange on the CCIV front heads, the cylinder stroke must be min. 20 mm



ARTICULATED MALE HINGE - MODEL BAS

+ = ADD THE STROKE

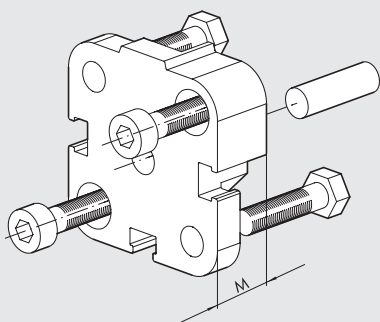


CMPC ISO, TWO-FLAT ISO, CCIV ISO

Code	Ø	B	D	M	N	only CCIV			Weight [g]
						N	R	S	
W0950322006	32	14	22	10	72.5	78	16	10	106
W0950402006	40	16	25	12	77	82	18	10	142
W0950502006	50	16	27	12	80	-	21	12	236
W0950632006	63	21	32	16	89.5	-	23	12	336
W0950802006	80	21	36	16	100	-	28	16	572
W0951002006	100	25	41	20	117.5	-	30	16	840

Note: Supplied with 4 screws, 4 washers

FLANGE FOR OPPOSITE CYLINDERS

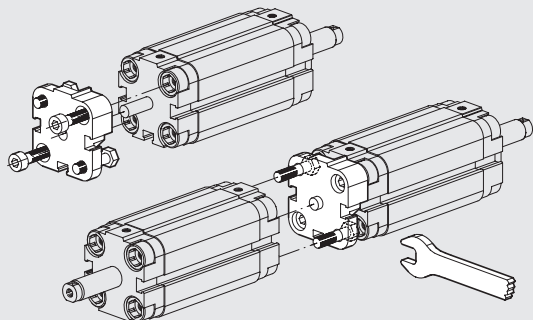


CMPC UNITOP Code	CMPC ISO Code	Ø	M	Weight [g]	
				UNITOP	ISO
0950123060 ▲	-	12	12.5	29	-
0950123060 ▲	-	16	12.5	29	-
0950203060	-	20	12.5	45	-
0950253060	-	25	13	57	-
0950323060	0950323060	32	14.5	88	88
0950403060	0950403061	40	14.5	106	106
0950503060	0950503061	50	14.5	172	158
0950633060	0950633061	63	14.5	274	258
0950803060	0950803061	80	16.5	470	452
0951003060	0951003061	100	19.5	826	801

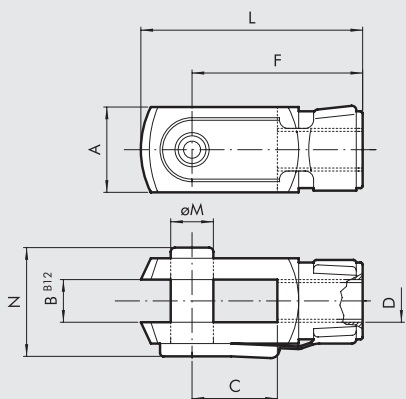
Note: Supplied complete with 1 pin, 4 screws

▲ Non UNITOP norm fixing distance

ASSEMBLING OPPOSING CYLINDERS



FORK - MODEL GK-M

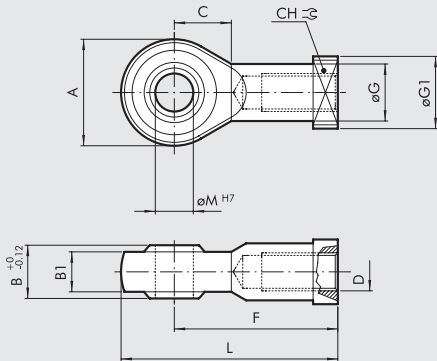


CMPC UNITOP AND ISO, TWO-FLAT UNITOP AND ISO, CCIV UNITOP AND ISO

Code	Ø	A	B	C	D	F	L	ØM	N	Weight [g]
W0950120020	12	12	6	12	M6	24	31	6	16	20
W0950200020	16	16	8	16	M8	32	42	8	22	48
W0950322020	20	20	10	20	M10x1.25	40	52	10	26	92
W0950322020	25	20	10	20	M10x1.25	40	52	10	26	92
W0950322020	32	20	10	20	M10x1.25	40	52	10	26	92
W0950322020	40	20	10	20	M10x1.25	40	52	10	26	92
W0950402020	50	24	12	24	M12x1.25	48	62	12	32	148
W0950402020	63	24	12	24	M12x1.25	48	62	12	32	148
W0950502020	80	32	16	32	M16x1.5	64	83	16	40	340
W0950802020	100	40	20	40	M20x1.5	80	105	20	48	690

Note: Individually packed

**ROD EYE - MODEL GA-M**

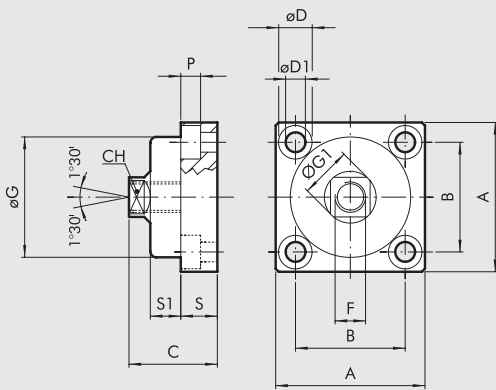


CMPC UNITOP E ISO, TWO-FLAT UNITOP E ISO, CCIV UNITOP AND ISO

Code	Ø	A	B	B1	C	CH	D	F	ØG	ØG1	L	ØM	Weight [g]
W0950120025	12	20	9	6.75	11	11	M6	30	10	13	40	6	28
W0950200025	16	24	12	9	13	14	M8	36	12.5	16	48	8	50
W0950322025	20	28	14	10.5	15	17	M10x1.25	43	15	19	57	10	78
W0950322025	25	28	14	10.5	15	17	M10x1.25	43	15	19	57	10	78
W0950322025	32	28	14	10.5	15	17	M10x1.25	43	15	19	57	10	78
W0950322025	40	28	14	10.5	15	17	M10x1.25	43	15	19	57	10	78
W0950402025	50	32	16	12	17	19	M12x1.25	50	17.5	22	66	12	116
W0950402025	63	32	16	12	17	19	M12x1.25	50	17.5	22	66	12	116
W0950502025	80	42	21	15	23	22	M16x1.5	64	22	27	85	16	226
W0950802025	100	50	25	18	27	30	M20x1.5	77	27.5	34	102	20	404

Note: Individually packed.

**COMPENSATION JOINT - MODEL GA**

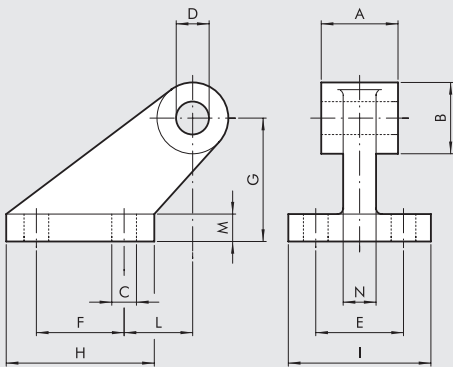


CMPC UNITOP E ISO, TWO-FLAT UNITOP AND ISO, CCIV UNITOP AND ISO

Code	Ø	A	B	C	CH	ØD	ØD1	F	ØG	ØG1	P	S	S1	Weight [g]
W0950326021	20	49	36	30	13	11	6.5	M10x1.25	39.5	17	6.5	12	10	172
W0950326021	25	49	36	30	13	11	6.5	M10x1.25	39.5	17	6.5	12	10	172
W0950326021	32	49	36	30	13	11	6.5	M10x1.25	39.5	17	6.5	12	10	172
W0950326021	40	49	36	30	13	11	6.5	M10x1.25	39.5	17	6.5	12	10	172
W0950406021	50	59	42	36	15	14	8.5	M12x1.25	44	19	8.5	15	13.5	286
W0950406021	63	59	42	36	15	14	8.5	M12x1.25	44	19	8.5	15	13.5	286
W0950506021	80	79	58	44	22	17	10.5	M16x1.5	59	26	10.5	20	15	628
W0950806021	100	89	65	51	27	19	12.5	M20x1.5	69	31	12.5	20	20	1200

Note: Individually packed.

**COUNTER-HINGE CETOP Ø 32 to 100**

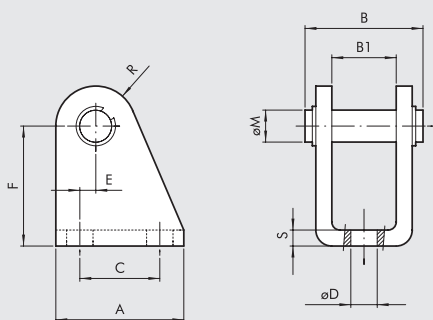


CMPC UNITOP E ISO, TWO-FLAT UNITOP E ISO, CCIV UNITOP AND ISO

Code	Ø	A	B	C	D	E	F	G	H	I	L	M	N	Weight [g]
W0950322008	32	26	19	7	10	25	20	32	37	41	18	8	10	96
W0950402008	40	28	26	9	12	32	32	45	54	52	25	10	12	216
W0950502008	50	32	26	9	12	32	32	45	54	52	25	10	12	212
W0950632008	63	40	33	11	16	40	50	63	75	63	32	12	15	440
W0950802008	80	50	33	11	16	40	50	63	75	63	32	12	15	464
W0951002008	100	60	44	14	20	50	70	90	103	80	40	16	22	985

Note: Supplied complete with 4 screws, 4 washers

**COUNTER-HINGE Ø 12 to 25 - MODEL BC**

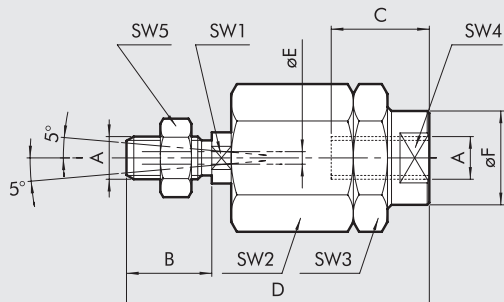


CMPC UNITOP, CCIV UNITOP

Code	Ø	A	B	B1	C	ØD	E	F	ØM	R	S	Weight [g]
W0950120005	12	25	25	12	15	5.5	2	27	6	7	3	40
W0950120005	16	25	25	12	15	5.5	2	27	6	7	3	40
W0950200005	20	32	30	16	20	6.5	4	30	8	10	4	78
W0950200005	25	32	30	16	20	6.5	4	30	8	10	4	78

Note: Supplied complete with 1 pin and and 2 snap rings

**SELF ALIGNING ROD COUPLER - MODEL GA-K**



**CMPC UNITOP AND ISO, TWO-FLAT UNITOP AND ISO, CCIV UNITOP AND ISO**

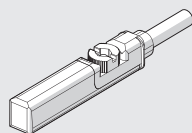
Code	Ø	A	B	C	D	ØE	ØF	SW1	SW2	SW3	SW4	SW5	Weight [g]
W0950120030	12	M6	10	10	35	2	8.5	5	13	13	7	10	24
W0950200030	16	M8	20	20	57	4	12.5	7	17	17	11	13	56
W0950322030	20	M10x1.25	20	20	71	4	22	12	30	30	19	17	216
W0950322030	25	M10x1.25	20	20	71	4	22	12	30	30	19	17	216
W0950322030	32	M10x1.25	20	20	71	4	22	12	30	30	19	17	216
W0950322030	40	M10x1.25	20	20	71	4	22	12	30	30	19	17	216
W0950402030	50	M12x1.25	24	20	75	4	22	12	30	30	19	19	220
W0950402030	63	M12x1.25	24	20	75	4	22	12	30	30	19	19	220
W0950502030	80	M16x1.5	32	32	103	4	32	20	41	41	30	24	620
W0950802030	100	M20x1.5	40	40	119	4	32	20	41	41	30	30	680

Note: Individually packed.

**RETRACTABLE SENSOR**

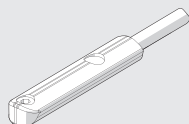
**SENSOR, SQUARE TYPE**

Latest generation, secure fixing



**SENSOR, OVAL TYPE**

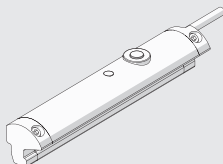
Traditional



For codes and technical data, see **chapter A6**.

**LTS POSITION SENSORS**

For technical data and usage strokes see **chapter A6**.



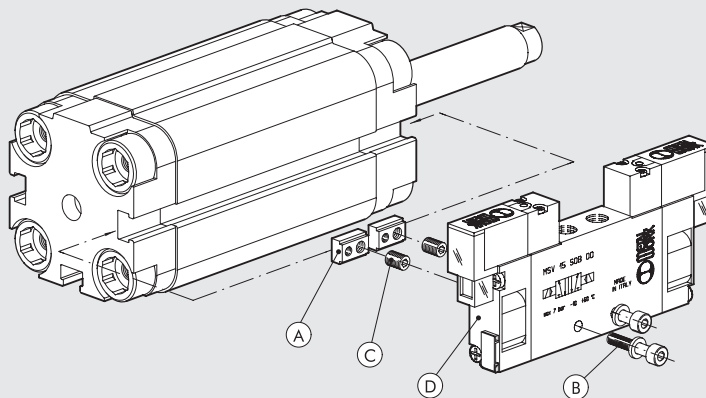
**VALVE ASSEMBLY ON CYLINDER**

With this type of cylinder, the valves (D) can be mounted directly using the retracting sensor slot, without requiring the use of intermediate brackets. This can be done using the special plates (A) which come with both M3 and M4 threads, and screws (B) of the size, type and quantity shown in the table below.

The plates are supplied complete with 2 stud pins, one M3 and one M4 (C).

After the valve centre distance and the position of the valve have been determined, the plates can be secured to the cylinder.

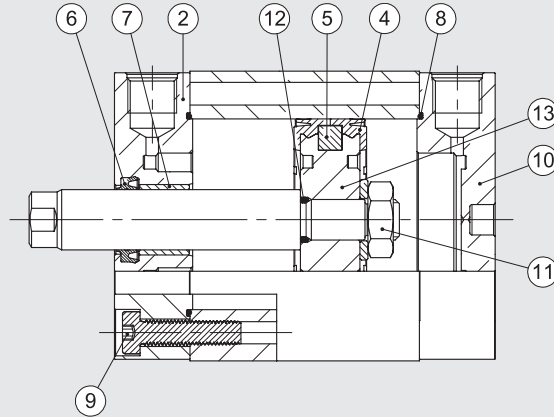
A "position memory" will be created to facilitate subsequent maintenance on the valve.



Type of valve to mount (D)	Fixing plate (A) CODE 0950003000	Position memory: grub screw (C) to be used	Screw (B) for connection to the cylinder (one per plate)	Washer (B) (one per screw)
MINIMACH	n° 2	M4	M3x16 UNI 5931 (DIN 912)	A3.2 UNI 1751 (DIN 127A)
MACH 11	n° 2	M4	M3x16 UNI 5931 (DIN 912)	A3.2 UNI 1751 (DIN 127A)
SERIE 70 1/8	n° 2	M3	M4x25 UNI 5931 (DIN 912)	—
SERIE 70 1/4	n° 2	M3	M4x30 UNI 5931 (DIN 912)	A4.3 UNI 1751 (DIN 127A)

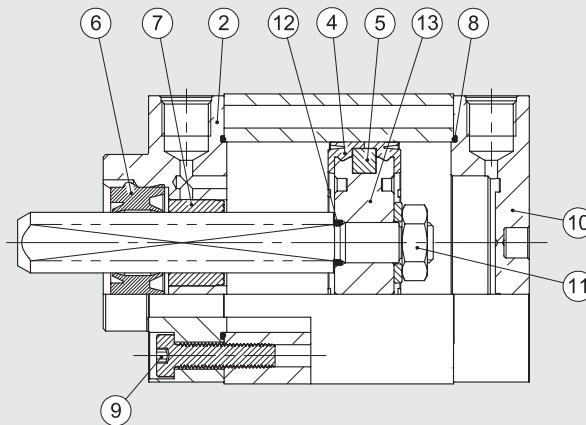
**SPARE PARTS**

**COMPACT CYLINDERS, SERIES CMPC**



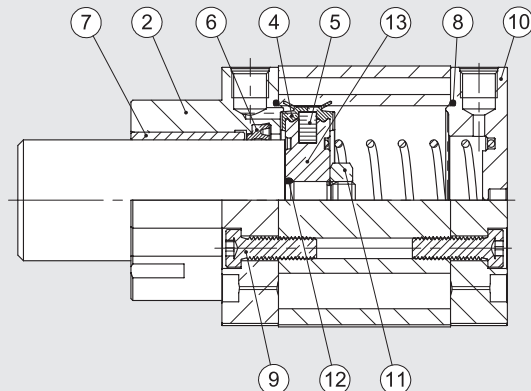
Code	Bores	Type	Parts
009 ... 7001	Ø 12 to 100	Complete set of gaskets polyurethane	4 6 8
009 ... 7008	Ø 20 to 100	Complete set of (high temperature) FKM/FPM gaskets	4 6 8
009 ... 7013	Ø 12 to 100	Polyurethane piston rod gasket kit	6
009 ... 7014	Ø 20 to 100	FKM/FPM piston rod gasket kit	6
009 ... 7101	Ø 12 to 100	Front cylinder head kit for UNITOP polyurethane	2 7 6 8 9
0090327101	Ø 32	Front cylinder head kit for ISO Ø 32 polyurethane	2 7 6 8 9
009 ... 8101	Ø 40 to 100	Front cylinder head kit for ISO polyurethane	2 7 6 8 9
009 ... 7201	Ø 12 to 100	Rear cylinder head kit for UNITOP polyurethane	8 9 10
0090327201	Ø 32	Rear cylinder head kit for ISO Ø 32 polyurethane	8 9 10
009 ... 8201	Ø 40 to 100	Rear cylinder head kit for ISO polyurethane	8 9 10
009 ... 7401	Ø 12 to 100	Piston kit polyurethane	4 5 11 12 13
009 ... 7501	Ø 12 to 100	Magnet	5
009 ... 7901	Ø 12 to 100	Front + rear cylinder head + piston kit for UNITOP polyurethane	2 4 5 6 7 8 9 10 11 12 13
0090327901	Ø 32	Front + rear cylinder head + piston kit for ISO Ø 32 polyurethane	2 4 5 6 7 8 9 10 11 12 13
009 ... 8901	Ø 40 to 100	Front + rear cylinder head + piston kit for ISO polyurethane	2 4 5 6 7 8 9 10 11 12 13

**COMPACT CYLINDERS, SERIES CMPC TWO-FLAT**



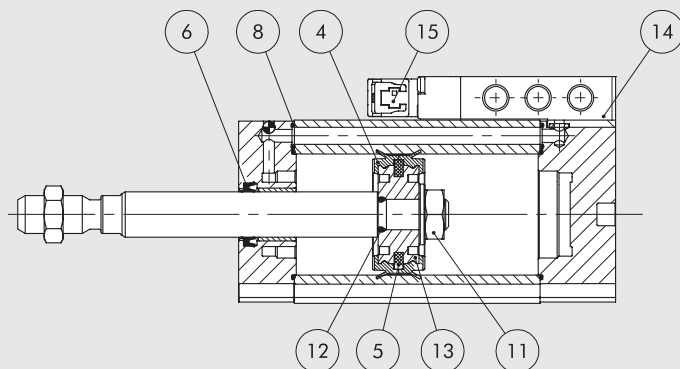
Code	Bores	Type	Parts
009 ... 7001F	Ø 32 to 80	Set of gaskets	4 8 12
009 ... 7101F	Ø 40 to 80	Front cylinder head kit for UNITOP	2 7 6 8 9
0090327101F	Ø 32	Front cylinder head kit for ISO Ø 32	2 7 6 8 9
009 ... 8101F	Ø 40 to 80	Front cylinder head kit for ISO	2 7 6 8 9
009 ... 7201	Ø 40 to 80	Rear cylinder head kit for UNITOP	8 9 10
0090327201	Ø 32	Rear cylinder head kit for ISO Ø 32	8 9 10
009 ... 8201	Ø 40 to 80	Rear cylinder head kit for ISO	8 9 10
009 ... 7401	Ø 32 to 80	Piston kit	4 5 11 12 9 13
009 ... 7501	Ø 32 to 80	Magnet	5
009 ... 7901F	Ø 40 to 80	Front + rear cylinder head + piston kit for UNITOP	2 4 5 6 7 8 9 10 11 12 13
0090327901F	Ø 32	Front + rear cylinder head + piston kit for ISO Ø 32	2 4 5 6 7 8 9 10 11 12 13
009 ... 8901F	Ø 40 to 80	Front + rear cylinder head + piston kit for ISO	2 4 5 6 7 8 9 10 11 12 13

COMPACT CYLINDERS, STOPPER



Code	Bores	Type	Parts
009...7060	Ø 20; 32; 50; 80	Complete set of gaskets	4 6 8
009...7160	Ø 20; 32; 50; 80	Front cylinder head kit for UNITOP	2 7 6 8 9
0090327160	Ø 32	Front cylinder head kit for ISO Ø 32	2 7 6 8 9
009...8160	Ø 50; 80	Front cylinder head kit for ISO	2 7 6 8 9
009...7201	Ø 20; 32	Rear cylinder head kit for UNITOP Ø 20 - Ø 32	8 9 10
009...7260	Ø 50; 80	Rear cylinder head kit for UNITOP	8 9 10
0090327201	Ø 32	Rear cylinder head kit for ISO Ø 32	8 9 10
009...8260	Ø 50; 80	Rear cylinder head kit for ISO	8 9 10
0090207401	Ø 20	Piston kit Ø 20	4 5 11
009...7460	Ø 32; 50; 80	Piston kit	4 5 11 12 13
009...7501	Ø 20; 32; 50; 80	Magnet	5
009...7960	Ø 20; 32; 50; 80	Front + rear cylinder head + piston kit for UNITOP	2 4 5 6 7 8 9 10 11 12 13
0090327960	Ø 32	Front + rear cylinder head + piston kit for ISO Ø 32	2 4 5 6 7 8 9 10 11 12 13
009...8960	Ø 50; 80	Front + rear cylinder head + piston kit for ISO	2 4 5 6 7 8 9 10 11 12 13

COMPACT CYLINDER WITH INTEGRATED VALVE, SERIES CCIV



Code	Bores	Type	Parts
009...7001	Ø 20 to 40	Complete set of gaskets polyurethane	4 6 8
009...7013	Ø 20 to 40	Polyurethane piston rod gasket kit	6
009...7401	Ø 20 to 40	Piston kit polyurethane	4 5 11 12 13
009...7501	Ø 20 to 40	Magnet	5
70800201C2	Ø 20 to 40	CCIV solenoid-pneumatic monostable 24 VDC plug-in valve	14
70800201CM	Ø 20 to 40	CCIV solenoid-pneumatic monostable 24 VDC M8 valve	14
722113541100	Ø 20 to 40	Plug-in pilot	15
7222M3541100	Ø 20 to 40	M8 pilot	15